

Next Gen

Guideline Specifications: North America  
Acoustic Fabric Panels

NOVAWALL®

Version 1.0    September 27, 2018



# Contents

## Acoustic Fabric Panels Overview

### **1.0 Acoustic Fabric Components**

- 1.1 Novawall Architectural Details at Ceiling
- 1.2 Novawall Architectural Details at Panel Joint Conditions
- 1.3 Novawall Architectural Details at Base
- 1.4 Novawall Architectural Details at Inside and Outside Corners
- 1.5 Novawall Architectural Details at Outside Corners
- 1.6 Novawall Architectural Details at Steelcase Glass Frame Abutment
- 1.7 Novawall Architectural Details at Store Front Mullion Abutment
- 1.8 Novawall Architectural Details at Roll Down Gate at ATM Vestibule
- 1.9 Novawall Architectural Details at Wall Plane Change
- 1.10 Novawall Architectural Details at Door Frames
- 1.11 Novawall Architectural Details at Exposed Panel Termination

### **2.0 Acoustical Fiberglass**

- 2.1 Knauf ASB with Ecosse Technology
- 2.2 Knauf Data Sheets
- 2.3 Knauf 3<sup>rd</sup> Part Certifications

### **3.0 Fabric Selections**

- 3.1 Fabric Selection WC-1
- 3.2 Fabric Selection WC-2

### **4.0 Warranty/Care & Maintenance**

- 4.1 Novawall Limited Lifetime Warranty
- 4.2 Novawall Care & Maintenance

### **5.0 Manufacturer Contact Information**

- 5.1 Contact Page
- 5.2 Certified Novawall Distributors

# Acoustic Fabric Panel Solutions

## Overview

NOVALL®

Novawall Acoustic Fabric Panels are a site fabricated solution for sound attenuation in common areas and for privacy requirements in client conference rooms and private offices. Custom is standard for Novawall, whether installing on walls or ceilings. Novawall can accommodate curved walls and a wide array of geometries. Design options are limitless with Novawall.

Novawall works with the widest variety of textiles intended for acoustics. Our Limited Lifetime Warranty on our extrusions, ensure your project stays intact for the “useable life” of the installation. Once installed, Novawall is completely serviceable in place. Future updates to freshen a look can be as simple as changing the fabric.



**Novawall** is the best way to reduce interior noise and harsh sound reflections created by adjacent hard surface finishes.

- Novawall is site fabricated to meet short construction schedules.
- Novawall can be installed in either new or existing offices, and as part of post construction acoustical fixes.
- Novawall is completely serviceable in place. Damaged fabric can be removed and replaced without significant impact to the workplace.
- Extensive design options, custom and complex geometries, digital printing, corporate branding, curved walls and Novawall can install the widest variety of acoustical panel textiles.
- Novawall panel sizes are limited only by the fabric width.
- Strict adherence to code compliance for fire testing and available acoustical data.



NOVALL reserves the right to improve and change product information shown in this document. Please always check for latest revision.

# Acoustic Fabric Panel Solutions

## Process

NOVAWALL®

Novawall is a custom, site assembled acoustic product and the process begins with a request for quote from the GC to our respective **Certified Novawall Distributor** for the specific project location. Once the Novawall Certified Distributor has submitted a quote and received a notice to proceed, the next segment is submission of shop drawings and samples, placing any material reserves and purchase orders with “cuttings for approval” to conserve the entire fabric requirement.

Once shop drawings are approved, release of all material orders would occur and a start and completion installation schedule coordinated with the GC. The lead times for several materials combined with the size of scope and labor requirement should encourage the GC to be involved with and to release the Certified Novawall Distributor at the earliest possible opportunity,



## Lead Time

- **Novawall Extrusions** are stocked in Alexandria, VA and will ship within 3 days from date of order.
- **Novawall Acoustic Treatment – Knauf** is commonly purchased locally with an established acoustic product distributor or may be purchased through a national acoustic product distributor. If production is required Knauf may be additionally 2 – 4 weeks.
- **NEXT GEN Fabric Selection WC-1 Carnegie Xorel Strie 6423 Color 818** – Novawall has secured a promise from Carnegie that 250 LY of the specified fabric will be held in NY side marked for Citi and 250 LY in Europe at the Mill. As the quantity is exhausted in NY it will stimulate 250 yards to ship from Europe to NY and production of another 250 yards will be prepared. Typical delivery from Europe is 7 – 10 days.
- **CITIGOLD Fabric Selection WC-3 Maharam Sharkskin2 901650-039 Lyric** Fabric in New York, depending on demand production could be 9 weeks, WC-3 scope is generally small.



NOVAWALL reserves the right to improve and change product information shown in this document. Please always check for latest revision.

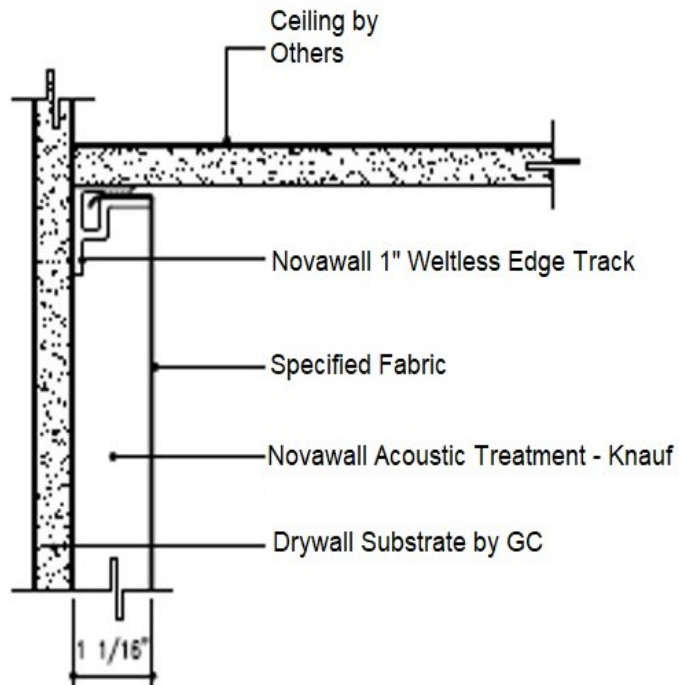


# 1.0 Acoustic Fabric Panels Components

# Acoustic Fabric Panel Solutions

## Novawall Architectural Details at Ceiling

NOVAWALL®

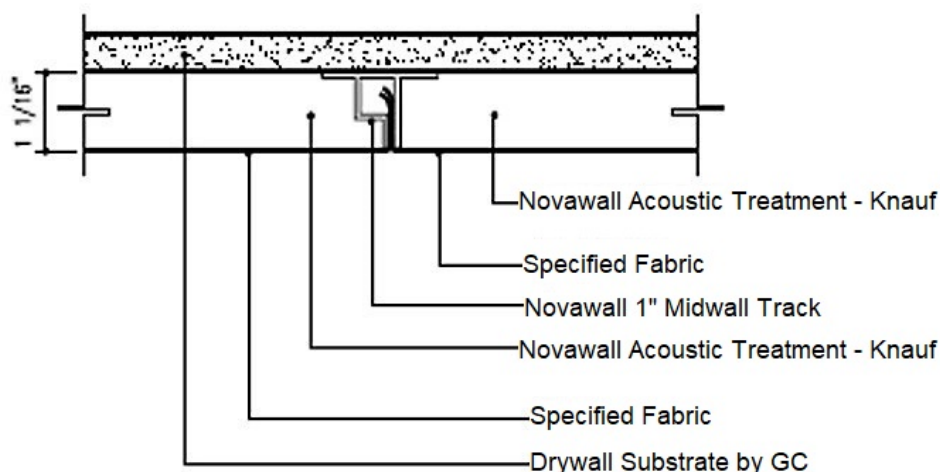


Novawall extrusions are installed on site directly to the drywall using a pneumatic staple gun. Acoustical core may be installed with staples or course drywall screws. Novawall does not use adhesives. If damage occurs, a Novawall installation is completely serviceable in place.

# Acoustic Fabric Panel Solutions

## Novawall Architectural Details at Panel Joint Conditions

NOVAWALL®

**Note:**

- Seams should be strategic to provide the largest possible panel width
- Panel seam locations should be considered in relation to furniture or other elements on the wall or surrounding area

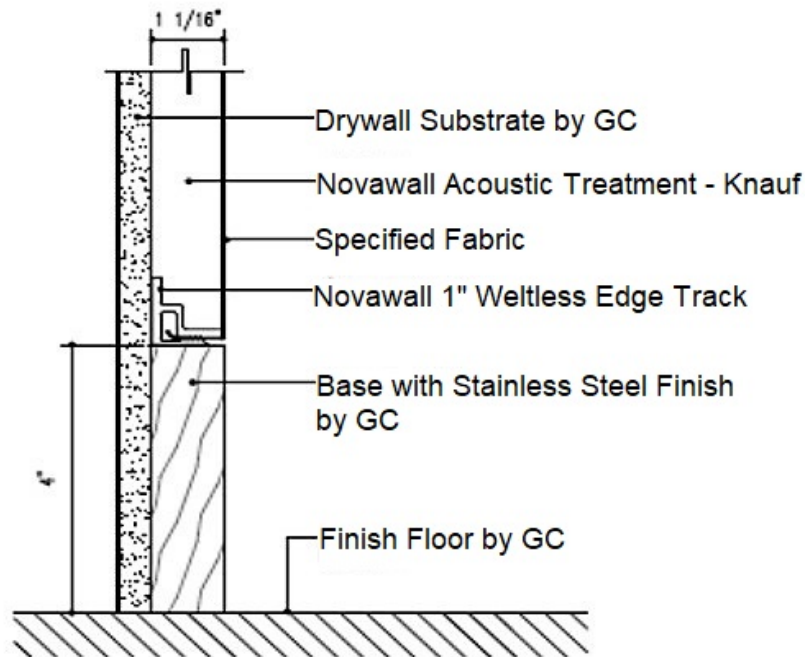


Novawall extrusions are installed on site directly to the drywall using a pneumatic staple gun. Acoustical core may be installed with staples or course drywall screws. Novawall does not use adhesives. If damage occurs a Novawall installation is completely serviceable in place.

# Acoustic Fabric Panel Solutions

## Novawall Architectural Details at Base

NOVAWALL®

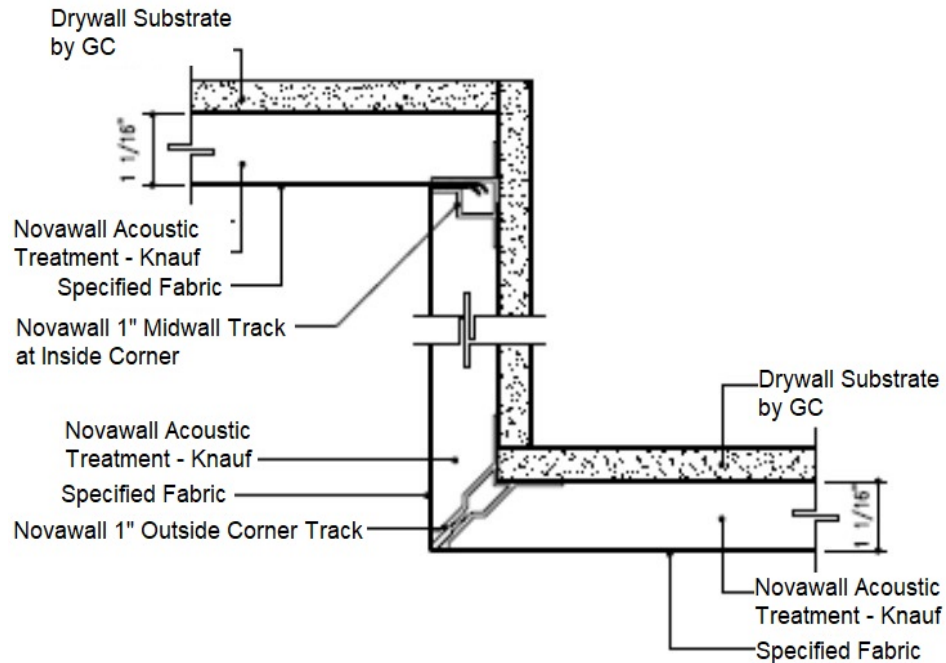


Novawall extrusions are installed on site directly to the drywall using a pneumatic staple gun. Acoustical core may be installed with staples or course drywall screws. Novawall does not use adhesives. If damage occurs a Novawall installation is completely serviceable in place.

# Acoustic Fabric Panel Solutions

## Novawall Architectural Details at Inside and Outside Corners

NOVAWALL®



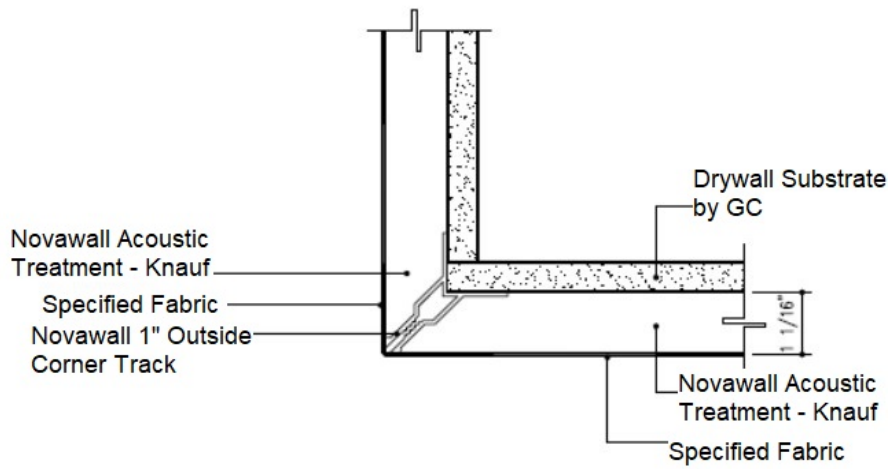
Novawall extrusions are installed on site directly to the drywall using a pneumatic staple gun. Acoustical core may be installed with staples or course drywall screws. Novawall does not use adhesives. If damage occurs a Novawall installation is completely serviceable in place.



# Acoustic Fabric Panel Solutions

## Novawall Architectural Details at Outside Corners

NOVAWALL®



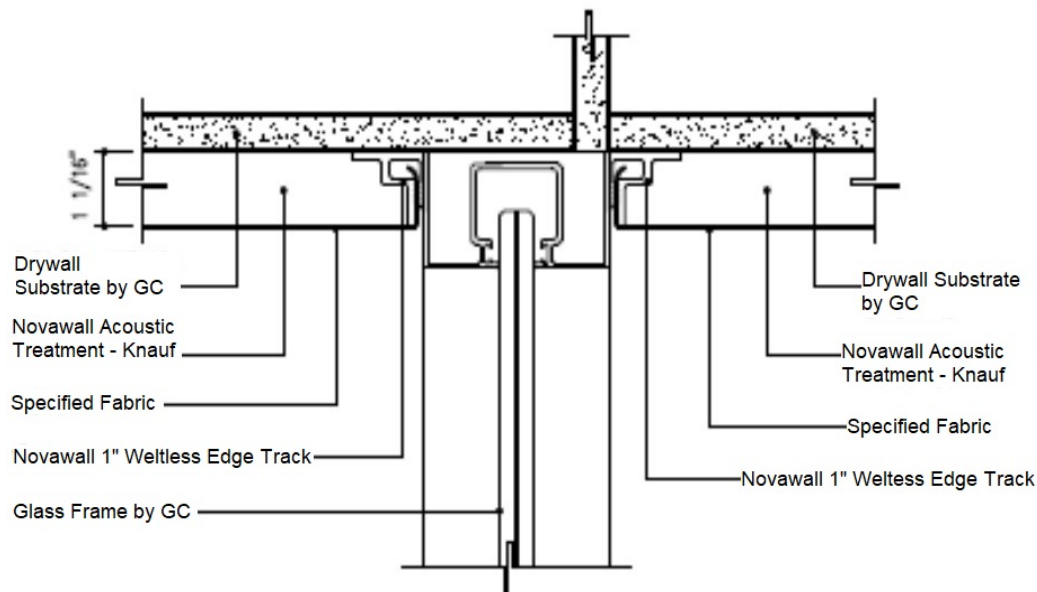
Novawall extrusions are installed on site directly to the drywall using a pneumatic staple gun. Acoustical core may be installed with staples or course drywall screws. Novawall does not use adhesives. If damage occurs a Novawall installation is completely serviceable in place.



# Acoustic Fabric Panel Solutions

## Novawall Architectural Details at Steelcase Glass Frame Abutment

NOVAWALL®

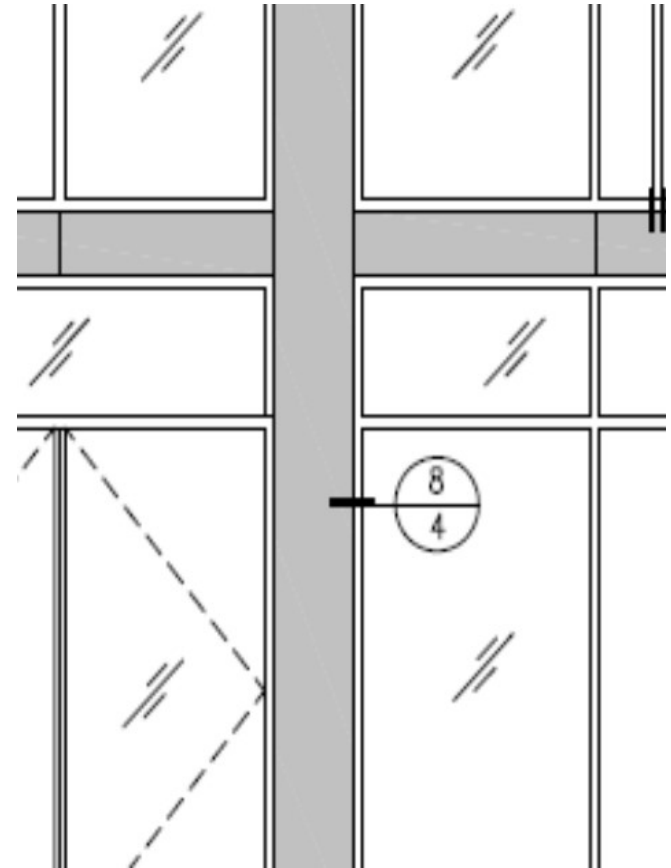
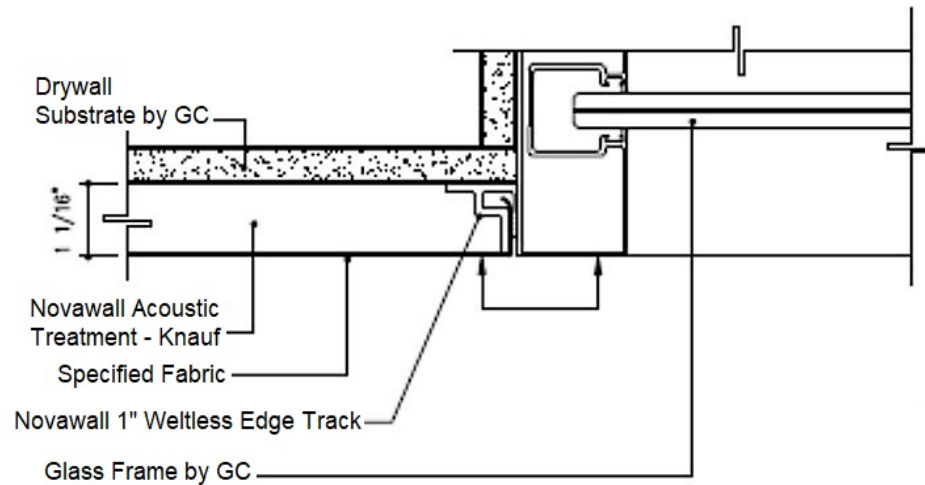


Novawall extrusions are installed on site directly to the drywall using a pneumatic staple gun. Acoustical core may be installed with staples or course drywall screws. Novawall does not use adhesives. If damage occurs a Novawall installation is completely serviceable in place.

# Acoustic Fabric Panel Solutions

## Novawall Architectural Details at Store Front Mullion Abutment

NOVAWALL®

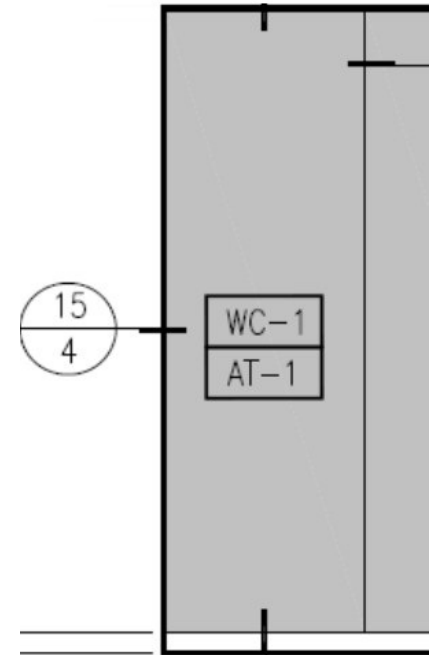
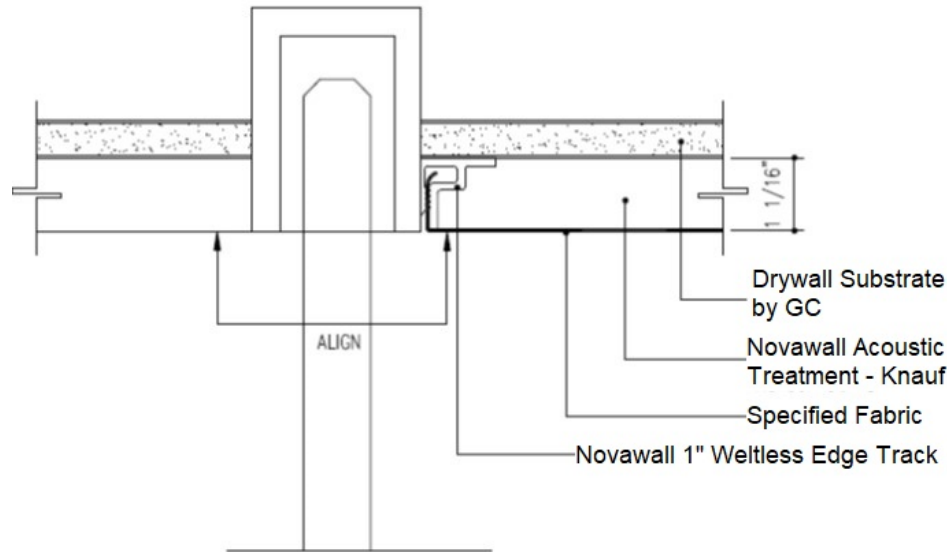


Novawall extrusions are installed on site directly to the drywall using a pneumatic staple gun. Acoustical core may be installed with staples or course drywall screws. Novawall does not use adhesives. If damage occurs a Novawall installation is completely serviceable in place.

# Acoustic Fabric Panel Solutions

## Novawall Architectural Details at Roll Down Gate at ATM Vestibule

NOVAWALL®

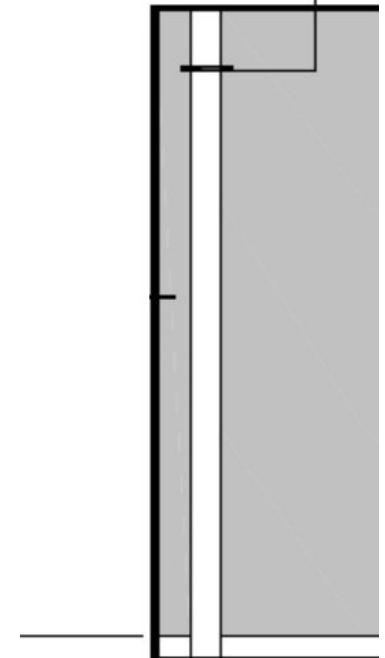
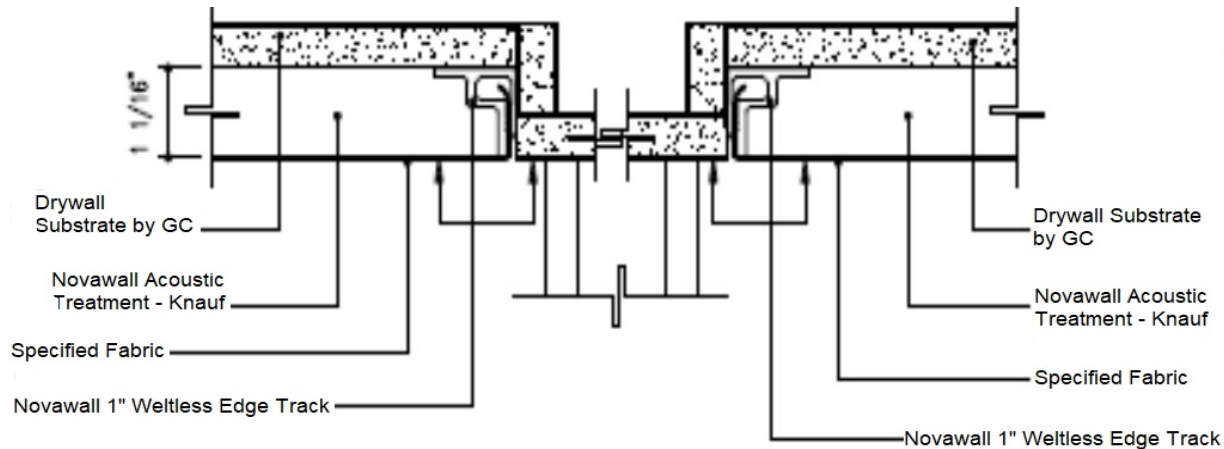


Novawall extrusions are installed on site directly to the drywall using a pneumatic staple gun. Acoustical core may be installed with staples or course drywall screws. Novawall does not use adhesives. If damage occurs a Novawall installation is completely serviceable in place.

# Acoustic Fabric Panel Solutions

## Novawall Architectural Details at Wall Plane Change

NOVAWALL®

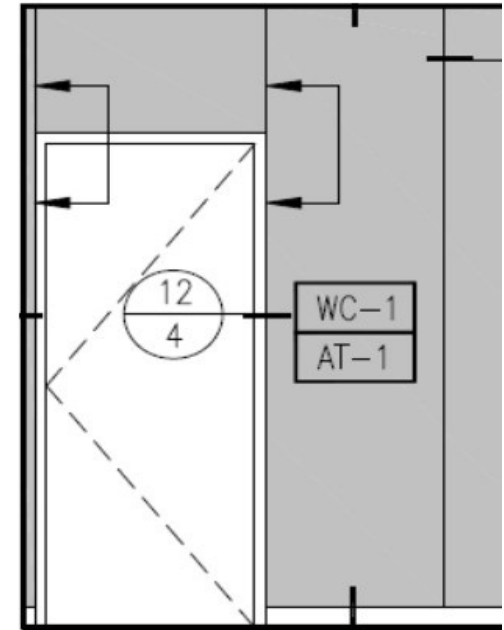
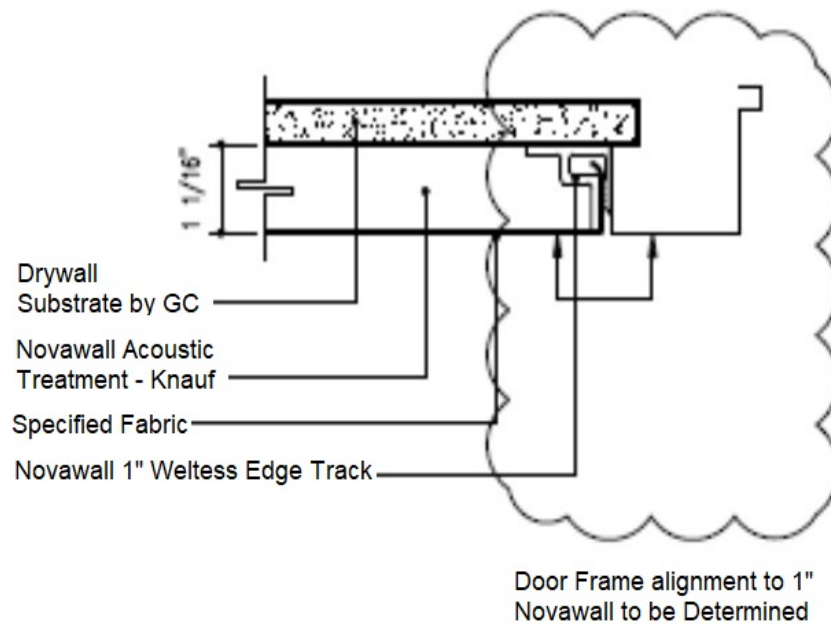


Novawall extrusions are installed on site directly to the drywall using a pneumatic staple gun. Acoustical core may be installed with staples or course drywall screws. Novawall does not use adhesives. If damage occurs a Novawall installation is completely serviceable in place.

# Acoustic Fabric Panel Solutions

## Novawall Architectural Details at Door Frames

NOVAWALL®

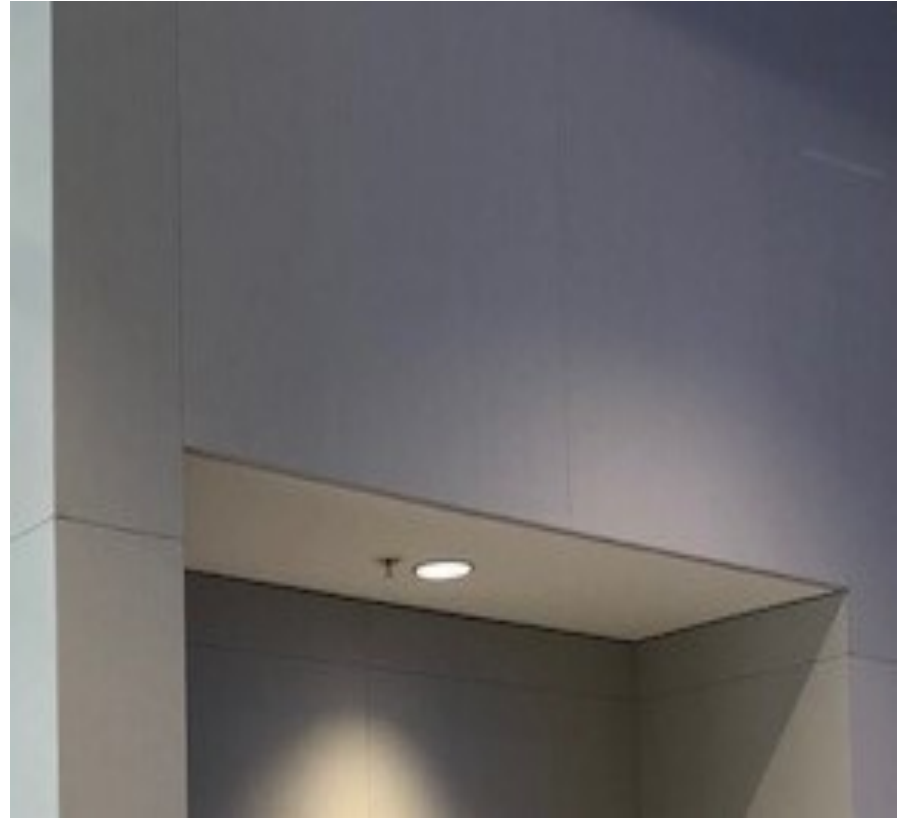
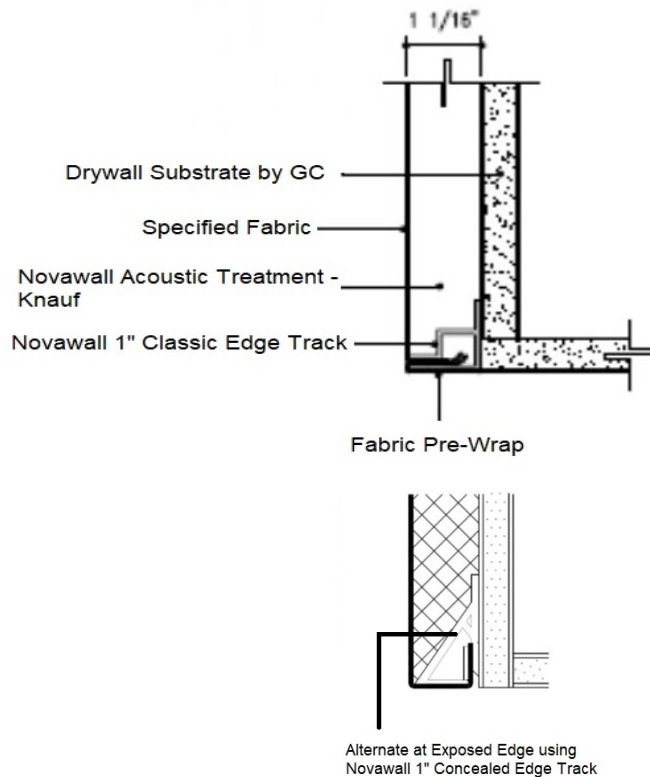


Novawall extrusions are installed on site directly to the drywall using a pneumatic staple gun. Acoustical core may be installed with staples or course drywall screws. Novawall does not use adhesives. If damage occurs, a Novawall installation is completely serviceable in place.

# Acoustic Fabric Panel Solutions

NOVAWALL®

## Novawall Architectural Details at Exposed Panel Termination



Novawall extrusions are installed on site directly to the drywall using a pneumatic staple gun. Acoustical core may be installed with staples or course drywall screws. Novawall does not use adhesives. If damage occurs, a Novawall installation is completely serviceable in place.



## 2.0 Acoustical Fiberglass

# Acoustic Fabric Panel Solutions

NOVAWALL®

## Acoustical Fiberglass Absorption Coefficients – Knauf ASB with Ecosse Technology



True interior acoustical support begins with 1" Acoustical Fiberglass Board - 6lb density. Panel thickness should always be a minimum of 1" thick to maximize the sound absorption performance for any room.

**A** Knauf Acoustical Smooth Board with Ecosse Technology is a standard used by most Novawall Distributors.

**B** The chart provides absorption coefficients of Knauf fiberglass. The NRC is the average of the absorption coefficients of 4 frequencies of 250, 500, 1000 and 2000. Refer to the acoustical test reports of the selected fabrics to understand the reasonable performance of the Novawall acoustical application.

Sound Absorption Coefficients (ASTM C 423, Type A Mounting)		Octave Band Center Frequency (cycles/sec.)						
Density	Thickness	125	250	500	1000	2000	4000	NRC
6.0 PCF (96 kg/m³)	1" (25 mm)	.05	.26	.77	1.04	1.04	1.03	.80
	1½" (38 mm)	.13	.58	1.01	1.05	1.00	1.01	.90
	2" (51 mm)	.32	.81	1.08	1.06	1.03	1.04	1.00

# Acoustic Fabric Panel Solutions

## Acoustical Fiberglass Data



A Knauf Acoustical Smooth Board with Ecoset Technology is a standard used by most Novawall Distributors. Knauf has the highest amount of certified post consumer recycled glass, it is Greenguard Certified Gold for Indoor Air Quality and Certified Formaldehyde Free. Made in the USA.

**Acoustical Smooth Board**  
with ECOSET<sup>®</sup> Technology

**with ECOSET<sup>®</sup> Technology**

**Acoustical Smooth Board with ECOSET<sup>®</sup> Technology**

**Description**  
Knauf Acoustical Smooth Board is a 0.5" (1/2") thick and acoustical insulation product made from recycled glass fiber reinforced with Ecoset Technology. The board is made in one size with precision cut tolerances.

**Color**  
ECOSET Technology gives the product unique brown color.

**ECOSET<sup>®</sup> Technology**  
ECOSET Technology is a revolutionary fiber density technology that provides superior sound absorption characteristics that even a human can feel. The board is made from recycled glass fiber reinforced with Ecoset Technology. The board is made in one size with precision cut tolerances. ECOSET Technology reduces noise reflected sound and does not contain glass, formaldehyde, or other harmful substances.

**Application**  
Knauf Acoustical Smooth Board with ECOSET Technology is a standard product for sound and vibration reduction in all applications, including sound, noise, and vibration reduction in all applications.

**Features and Benefits**  
Density and Size Available  
• Knauf Acoustical Smooth Board with ECOSET Technology is available in a density and size that is perfect for sound and vibration reduction in all applications.  
• The board is made from recycled glass fiber reinforced with Ecoset Technology.  
• The board is made from recycled glass fiber reinforced with Ecoset Technology.  
• The board is made from recycled glass fiber reinforced with Ecoset Technology.

**Performance**  
• Knauf Acoustical Smooth Board with ECOSET Technology is a standard product for sound and vibration reduction in all applications.  
• The board is made from recycled glass fiber reinforced with Ecoset Technology.  
• The board is made from recycled glass fiber reinforced with Ecoset Technology.

**Low Emission**  
Knauf Acoustical Smooth Board with ECOSET Technology is a standard product for sound and vibration reduction in all applications.

**Product Availability**  
1. Product is available in a density and size that is perfect for sound and vibration reduction in all applications.  
2. Knauf Acoustical Smooth Board is a standard product for sound and vibration reduction in all applications.  
3. Product is available in a density and size that is perfect for sound and vibration reduction in all applications.  
4. The board is made from recycled glass fiber reinforced with Ecoset Technology.

**Green Guard Gold**  
Knauf Acoustical Smooth Board with ECOSET Technology is a standard product for sound and vibration reduction in all applications.

**GREENGUARD Gold**  
Knauf Acoustical Smooth Board with ECOSET Technology is a standard product for sound and vibration reduction in all applications.

# Acoustic Fabric Panel Solutions

## Acoustic Board Certifications

NOVAWALL®



**A** Knauf Acoustical Smooth Board with Ecosse Technology is a standard used by most Novawall Distributors. Knauf has the highest amount of certified post consumer recycled glass, it is Greenguard Certified Gold for Indoor Air Quality and Certified Formaldehyde Free. Made in the USA.

**CERTIFICATE OF COMPLIANCE**

**Knauf Insulation**  
**Earthwool™ Insulation Board and Acoustical Board with ECOSE® Technology**

3009-429	
Certificate Number	
31010109-12210108	
Certificate Period	
Confid	
Status	

UL 2818 - 2013 Gold Standard for Chemical Emissions for Building Materials, Finishes and Furnishings

This Report is prepared pursuant to an agreement with the California Department of Public Health (CDPH) pursuant to the California Proposition 65, which requires manufacturers to provide information on the chemical composition of their products. This report is prepared pursuant to an agreement with the California Department of Public Health (CDPH) pursuant to the California Proposition 65, which requires manufacturers to provide information on the chemical composition of their products. This report is prepared pursuant to an agreement with the California Department of Public Health (CDPH) pursuant to the California Proposition 65, which requires manufacturers to provide information on the chemical composition of their products.

Environment

GREENGUARD Gold Certification Criteria for Building Products and Interior Finishes

Criteria	CAS Number	Maximum Allowable Predicted Concentration	Units
TVOC <sub>10</sub>		0.20	mg/m <sup>3</sup>
Formaldehyde	50-00-0	0.05 (ppb)	µg/m <sup>3</sup>
Total Aldehydes		0.05	µg/m <sup>3</sup>
α-Pinene/limonene	4838-18-1	0.5	µg/m <sup>3</sup>
Particle Matter less than 10 µm <sub>10</sub>		30	µg/m <sup>3</sup>
1,4-Methyl-2-pyrrolidone	872-09-4	0.05	µg/m <sup>3</sup>
Individual VOCs		0.1 (ppb)	µg/m <sup>3</sup>

(1) Refer to the list of chemical substances in the GreenGuard Gold Standard for Building Products and Interior Finishes. Chemical substances listed in this table are subject to the GreenGuard Gold Standard for Building Products and Interior Finishes. Chemical substances not listed in this table are not subject to the GreenGuard Gold Standard for Building Products and Interior Finishes. Chemical substances listed in this table are subject to the GreenGuard Gold Standard for Building Products and Interior Finishes. Chemical substances not listed in this table are not subject to the GreenGuard Gold Standard for Building Products and Interior Finishes.

Environment

Environment

ENVIRONMENTAL CLAIM VALIDATION SUMMARY

**Knauf Insulation**  
 Knauf Acoustical Board Smooth with ECOSE® Technology and Acoustical Smooth Board

Report Number:  
30425-4210

Validation Period:  
08/20/2012 - 07/20/2018

Project Number:  
15CA1450

**Claim:**  
 Commercial and Industrial products contain an average of 78.98% recycled content, consisting of 37.33% Post-Consumer and 38.63% Pre-Consumer recycled glass.

**Method:**  
 UL ECVF 2009 Recycled Content

**Facility:**  
 Shelbyville, IN

**Claim:**  
 Residential products contain an average of 61.74% recycled content, consisting of 22.99% Post-Consumer and 38.75% Pre-Consumer recycled glass.

**Method:**  
 UL ECVF 2009 Recycled Content

**Facility:**  
 Shelbyville, IN

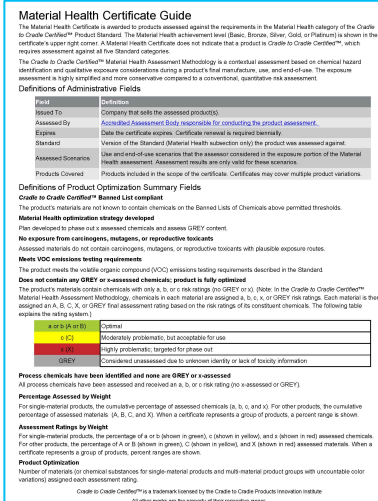
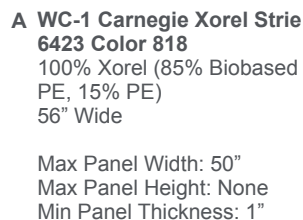
Environment

© 2013 UL Environment, Inc. 1100 North Dearborn Parkway, Harrisburg, PA 17105-2118. UL 2818-2013 Gold Standard for Chemical Emissions for Building Materials, Finishes and Furnishings.

## 3.0 Fabric Selections



## NOVAWALL®

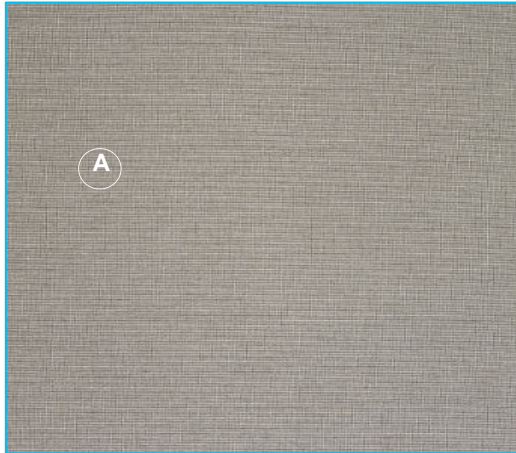




# Acoustic Fabric Panel Solutions

## CITIGOLD Fabric Selection WC-3

NOVAWALL®



**A WC-3 Maharam Sharkskin 2**  
**901650-039 Lyric**  
 89% Polyester, 11% Solution  
 dyed Polyester  
 54" Wide

Max Panel Width: 50"  
 Max Panel Height: None  
 Min Panel Thickness: 1"

**Specifications**  
 Sharkskin 2  
 901650

**Application**  
 Unstretched Walls

**Characteristics**  
 Content: 89% Polyester, 11% Solution-Dyed Polyester  
 Finish: RSCA Fine-Grain Resistant  
 Custom Finish: Available  
 Backing: Acoustic  
 Width: 54" (137 cm)  
 Roll Size: 66 yards (60 m)  
 Weight: 1.44 lb/yd (212 g/m)  
 Maintenance: Wipe Clean with water-based cleaner or mild, water-free dry cleaning solvent.  
 Colorfastness: Excellent  
 Note: This fabric can also be produced in black.

**Performance**  
 Acoustic Rating: Unstretched Walls: A7W C0.2 D0.5 M1C  
 Recyclability: This fabric meets all appropriate Recyclability requirements for upholstered walls. See Recycle  
 certificates for test results.  
 Life: Minimum 10 Years

**Endorsement**  
 Greenguard and Greenguard Gold Certified  
 RFL Free  
 RSCA Fine-Grain

**Warranty**  
 7 Years

© 2009 Maharam  
 Complete product information at [maharam.com](http://maharam.com)  
 800.642.2943

**Specifications**  
 Sharkskin 2  
 901650

**Application**  
 Unstretched Walls

**Characteristics**  
 Content: 89% Polyester, 11% Solution-Dyed Polyester  
 Finish: RSCA Fine-Grain Resistant  
 Custom Finish: Available  
 Backing: Acoustic  
 Width: 54" (137 cm)  
 Roll Size: 66 yards (60 m)  
 Weight: 1.44 lb/yd (212 g/m)  
 Maintenance: Wipe Clean with water-based cleaner or mild, water-free dry cleaning solvent.  
 Colorfastness: Excellent  
 Note: This fabric can also be produced in black.

**Performance**  
 Acoustic Rating: Unstretched Walls: A7W C0.2 D0.5 M1C  
 Recyclability: This fabric meets all appropriate Recyclability requirements for upholstered walls. See Recycle  
 certificates for test results.  
 Life: Minimum 10 Years

**Endorsement**  
 Greenguard and Greenguard Gold Certified  
 RFL Free  
 RSCA Fine-Grain

**Warranty**  
 7 Years

© 2009 Maharam  
 Complete product information at [maharam.com](http://maharam.com)  
 800.642.2943

## CERTIFICATE OF COMPLIANCE

**Greenguard**  
 PRODUCT CERTIFIED FOR  
 LOW CHEMICAL EMISSIONS  
 GOLD

**Maharam**  
**SHARKSKIN**

333203-020  
 Certificate Number

09/12/2018 - 06/06/2019  
 Certificate Period

Certified  
 Status

UL 2818 - 2012 Gold Standard for Chemical Emissions for Building Materials, Finishes and Furnishings

Product tested in accordance with UL 2818 and certified to these compliance to emission levels in UL 2818, Section 2.4 and 2.5.

Environment

### GREENGUARD Gold Certification Criteria for Furniture and Mattresses

Criteria	CAS Number	Maximum Allowable Predicted Concentration	Units
TVOC <sup>(1)</sup>	-	0.23	mg/m <sup>3</sup>
Formaldehyde <sup>(2)</sup>	50-00-0	0.02 (0.05)	µg/m <sup>3</sup>
Total Aldehydes <sup>(3)</sup>	-	0.143	µg/m <sup>3</sup>
α-Phenylglycidyl ether <sup>(4)</sup>	6999-10-5	0.5	µg/m <sup>3</sup>
α-Methyl-γ-pyrrolidone <sup>(5)</sup>	87-10-4	0.6	µg/m <sup>3</sup>
Individual VOCs <sup>(1)</sup>	-	0.1 (0.1)	µg/m <sup>3</sup>

<sup>(1)</sup> Defined as the total response of measured VOCs falling within the C1-C11 range, with responses calculated to a common range.

<sup>(2)</sup> The sum of all measured formaldehyde from formaldehyde through formaldehyde, plus formaldehyde, individually calculated to a common unit of 0.02 mg/m<sup>3</sup>. Reported through response measured by TOC/CO<sub>2</sub> method and by the following alternative response using HPLC/MS methods.

<sup>(3)</sup> Based on the C17-Phenylglycidyl Ether (PGE) limit for a maximum of 0.100 µg/m<sup>3</sup> and an inhibitor rate of 0.100 mg/m<sup>3</sup>.

<sup>(4)</sup> Available for chemical and listed as derived from the list of 171 in California Office of Environmental Health Hazard Assessment (OEHHA). These chemicals are listed as 0.05 µg/m<sup>3</sup> in response to the California Air Resources Board (CARB) 171 and 172. These chemicals are listed in the list of 171 and 172.

<sup>(5)</sup> These chemicals are listed as 0.05 µg/m<sup>3</sup> in response to the California Air Resources Board (CARB) 171 and 172. These chemicals are listed in the list of 171 and 172.

Environment

## 4.0 Warranty/Care & Maintenance

# Novawall Warranty

NOVAWALL®

## NOVAWALL LIMITED LIFETIME WARRANTY\*

- A. Novawall stretched fabric panel system installation shall be warranted by the Authorized Novawall Distributor or Certified Installer for the period defined in the contract documents.
- B. Novawall provides a **Limited Lifetime Warranty\*** to the Authorized Novawall Distributor or Certified Installer for the “Life” of the installation.

\*Novawall will provide replacement Novawall extrusions that are deemed defective at no charge to the Authorized Novawall Distributor or Certified Installer during the “useable life” of an installation. Novawall does not warranty against damage by others, normal wear and tear, the project installation, fabric or core materials which may have certain other manufacturer warranties.

- C. **EcoTRACK extrusions have a Five (5) Year Warranty** by Novawall to the Authorized Novawall Distributor or Certified Installer.

\*Novawall will provide replacement Novawall **EcoTRACK** extrusions that are deemed defective at no charge to the Authorized Novawall Distributor or Certified Installer during the 5 Year Warranty period. Novawall does not warranty against damage by others, normal wear and tear, the project installation, fabric or core materials which may have certain other manufacturer warranties.

- D. **Novawall is only installed by our Certified Distributors and they can be found on our Partners Page for every location. Work performed on Novawall System installations by anyone other than our Certified Partners will void the warranty. Novawall is never sold outside our network of Certified Distributor Installers.**

# Novawall Care & Maintenance

## General Information

NOVAWALL®

**Your Novawall system has been designed to minimize the cost of maintenance while preserving its pristine appearance.**

### **Fabric Maintenance**

Ease of maintenance is a principal benefit of the Novawall system. Gentle vacuum cleaning with a clean upholstery attachment is recommended should the fabric become soiled. Cleaning other than gentle brushing should not be attempted. Contact your Novawall Certified Installer for recommendations or to qualify the fabric manufacturer's specific cleaning instructions.

In the event the fabric is damaged beyond repair, the fabric can be easily removed and replaced by the Novawall Certified installer.

Should the Novawall system be struck with significant force, the fabric may become loose. The system has been designed to respond in a way to prevent permanent damage and to allow for the fabric to be re-stretched to its "as installed" condition. Contact your Novawall Certified Installer to re-stretch the fabric.

Dramatic changes in humidity may cause some fabrics to sag due to the moisture content of the air and some fiber content of the fabrics. This is a natural occurrence. Typically, the fabrics will retighten when the HVAC is turned on and the ambient air normalizes the level of humidity within the space. Re-stretching of the fabric can be performed by your Novawall Certified Installer, if required.

### **Behind Panel Access**

Should work in your facility require access behind the Novawall installation, contact your Novawall Certified Installer for assistance in fabric removal and replacement.

## 5.0 Manufacturer Contact Information

# Manufacturer Contact Information

NOVAWALL®

## Primary Contact

Bill Rankin  
Vice President  
Technical Sales  
Product Development

703.461.0113 x117 work  
832.623.3151 cell  
brankin@novawall.com

## Secondary Contact

Bobby Wright  
Senior Vice President

703.461.0113 x116 work  
202.971.1957 cell  
bwright@Novawall.com



# Certified Novawall Distributors

NOVAWALL®

## California

### San Diego

Quality Painting and  
Wallcoverings, Inc  
John Phipps  
john@QPandW.com  
Colin Cronin  
colin@QPandW.com  
(858) 453-9550

### Orange County

MB Coatings  
Michael Bartle  
[mike@mbcoatings.com](mailto:mike@mbcoatings.com)  
(714) 941-8880

### Los Angeles

Modern Interiors  
Don Bigler  
[dbigler@modern-interiors.com](mailto:dbigler@modern-interiors.com)  
Jeff Rigby  
[jrigby@modern-interiors.com](mailto:jrigby@modern-interiors.com)  
(310) 886-8864

### San Francisco

San Francisco Interiors  
Michael Van Bommel  
[michael@sfinteriors.com](mailto:michael@sfinteriors.com)  
(415) 526-1100

## Florida

### Miami

High Tech Ceiling  
Corinne Labastrous  
[corinne@hightechceiling.com](mailto:corinne@hightechceiling.com)  
(954) 462-4395

### Orlando

Southern Acoustics  
Matt Tallacksen  
[matt@soacoustics.com](mailto:matt@soacoustics.com)  
(407) 696-4448

### Fort Myers

Wallpaper World  
Bubba Chew  
[aichew@embarqmail.com](mailto:aichew@embarqmail.com)  
(239) 936-1911

## Illinois (South)

Acoustical Stretched Fabric  
System, Inc  
William Harris  
acousticalstretched@gmail.com  
(913) 345-1520

## Illinois (North)

RG Construction Services, Inc  
Tom Wilp  
[tom\\_wilp@rgconstruction.com](mailto:tom_wilp@rgconstruction.com)  
David Medows  
david\_medows@rgconstruction.com  
(630) 782-0180

## New York City

Cavanaugh Wall Solutions Inc  
Ron Brooks  
[ron@cavanaugh-wall.com](mailto:ron@cavanaugh-wall.com)  
(866) 783-6483

EverGreene Architectural Arts,  
Inc  
Phil Sabo  
[psabo@evergreene.com](mailto:psabo@evergreene.com)  
(212) 244-2800

## Upstate New York

Electrolab  
Doug Abt  
[doug@electrolabinc.com](mailto:doug@electrolabinc.com)  
(716) 833-8316

## Washington, DC

Direct Path Corporation  
Rob Reilly  
[rreilly@directpath.com](mailto:rreilly@directpath.com)  
Ricky Boddie  
[rboddie@directpath.com](mailto:rboddie@directpath.com)  
(703) 461-0433

**\*Contact Novawall Sales for Distributors in other regions**

